



ACT
Government

Education

**PRESCHOOL
PATHWAYS**

Preschool Pathways Modules



Acknowledgment of Country



The Education Directorate acknowledges the Ngunnawal people as the traditional custodians of the lands on which our schools and offices are located. We recognise other people or families with connection to the lands of the ACT and region.



To be able to educate children and young people from all across the world on these lands is a privilege.

We deeply respect their continuing cultures and the unique contributions they make to the life of these regions, lands and waters.

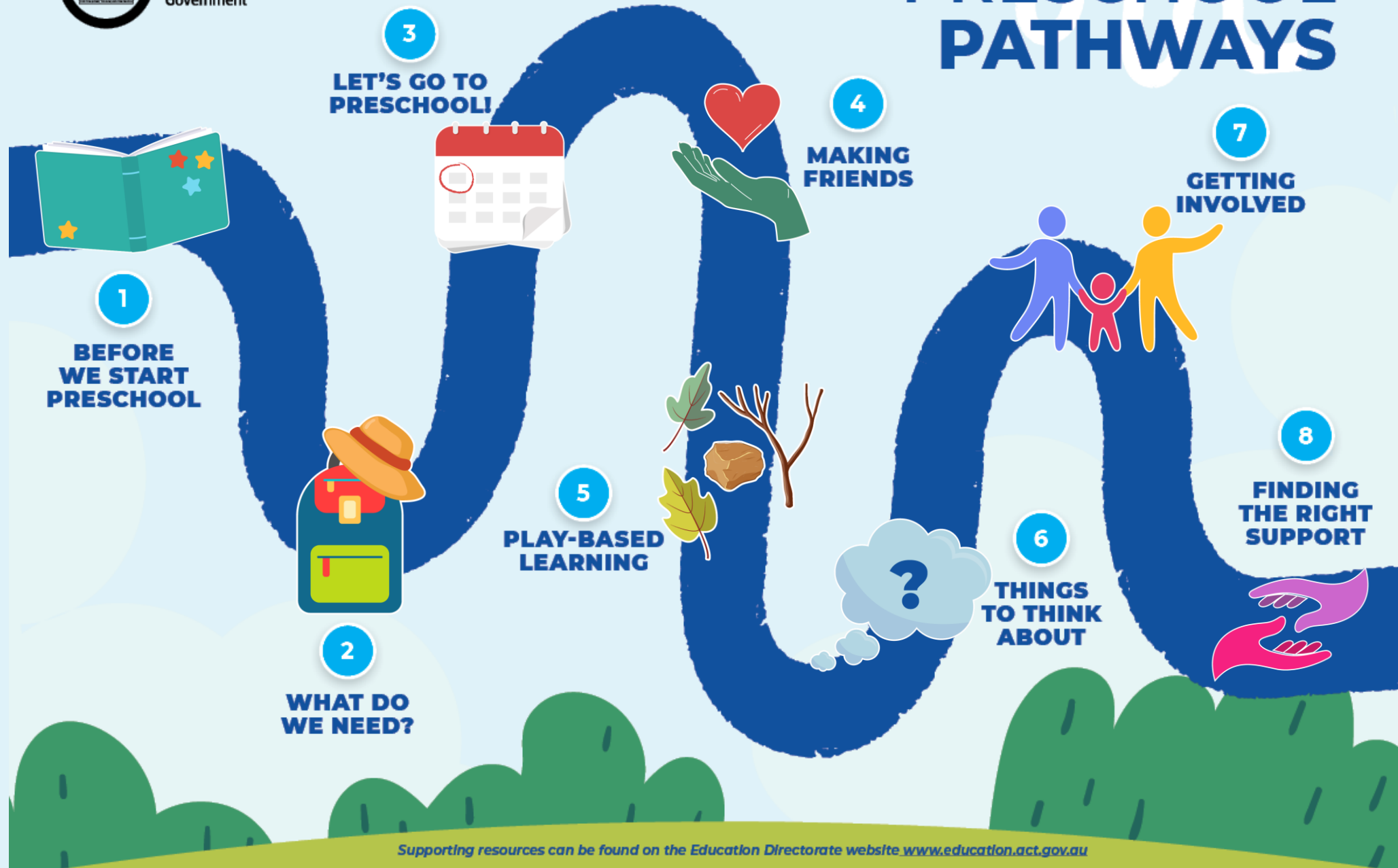
What is the Preschool Pathways Program?

As part of Set up for Success: An Early Childhood Strategy for the ACT, the ACT Education Directorate launched the Preschool Pathways program, designed to support children in their transition to preschool.

The program acknowledges families as their child's first teacher and recognises that a successful transition will look different for every child. When parents and carers, schools, early childhood education and care settings and the broader community work together to support children through transitions, we help them to feel secure, confident and connected as they take the next step on their learning journey.



PRESCHOOL PATHWAYS



The Preschool Pathways Partners

The Preschool Pathways Partners work with educators in:

- ACT public preschools
- ECEC services that partner in the targeted 3-year-old initiative.

Through coaching support, they build educators' knowledge, confidence and capacity to:

- implement inclusive practices
- enhance transitions and provide continuity for children and families.

Coaching support is triaged based on the circumstances of a setting and the level of support needed.

Session Outcomes

Brief overview of Modules 3 and 4 from the Preschool Pathways Resources

See how Preschool Pathways Partners can support transitions across early learning settings



Resources for Early Childhood Professionals

A suite of modules is available to support ECECs, early childhood service providers, preschools and community groups to enhance transition practices and work with parents and carers to build their knowledge and confidence to support their child in their transition to preschool.

The modules include:

- **Module 1: Supporting your child in their transition to preschool (for parents/carers)**
- **Module 2: Learn to play, play to learn (for parents/carers)**
- **Module 3: Best practice transitions (for ECECs/Preschools)**
- **Module 4: Train-the-trainer (for facilitators)**



Each learning module:

- Provides online and face-to-face delivery options
- Includes a slide deck, supporting resources and a facilitator guide
- Can be delivered as stand-alone sessions or connected sessions
- Is designed to be adapted to meet the needs of the setting and community.
- Can be co-designed by PPP and delivered by us or your organisation



Module 3: Best Practice Transitions (for ECECs/Preschools)

This workshop enables early childhood settings to reflect on their approach to transitions and identify areas for further improvement. You can deliver this session in your context with your preschool team. The Preschool Pathways partners are also available to support delivery.

**Target audience: Early
childhood professionals,
educators, schools, ECECs
(for delivery in house to
teams)**



Module Aims

- Understand the importance of quality transitions to ECEC and year- before-school settings
- Collaborate with EC professionals to discuss and gather ideas to promote effective transitions that promote relationship building and coordination between families, ECEC settings and preschools
- Develop approaches and practices for ECEC and government preschools to effectively transition children and families into their setting with positive relationships and confidence.



Module 4: Train-the-Trainer (for Facilitators)

This workshop supports partners to deliver the Preschool Pathways program modules and provides facilitation tips and tricks. This module has two components: Train-the-trainer for online delivery and Train-the-trainer for face-to-face delivery.

Target audience: Facilitators of Preschool Pathways modules



Module Aims

- Build confidence and skills to deliver face to face and online workshops.
- To give resources for both face to face and online delivery
- Allow for ongoing building of skills in house that can be utilised to support delivery of learning in areas of need for the community identified by educators

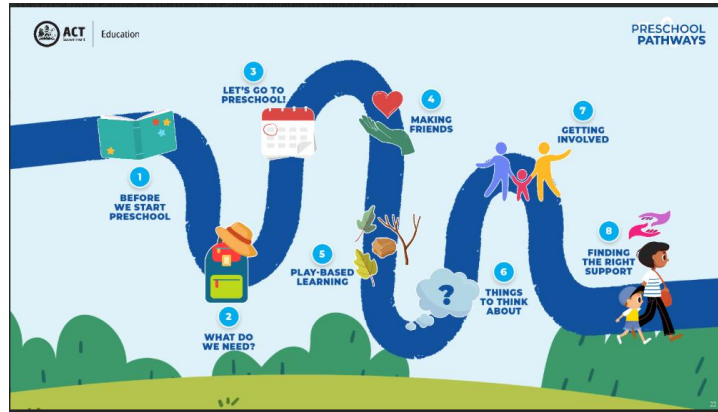


What do they contain?

- Videos
- Examples of services
- Links to websites
- Parent and developmental Information
- Information about play based learning.
- Guidance for families and ECECs.
- Facilitator guides
- Online checklists
- Online and face to face resources
- Module 4 – Preparing for different modes of delivery.
- PowerPoint presentations for both modules.



Examples of the Modules



2. WHAT DO WE NEED?

What do we need for effective transitions?

Transitions are effective when there are genuine partnerships between services and families.

When have you:

- Valued each other's knowledge of a child?
- Communicated freely and respectfully with each other?
- Engaged in shared decision making?
- Included other professionals supporting children with diverse abilities?



How PPPs Can Support Transitions

- Supporting warm introductions between ECECs and schools.
- Tailoring individual transition plans.
- Supporting families with their initial interactions with schools.
- Support school to facilitate case coordination between ECECs, schools, families and external providers.
- Supporting teams to embed inclusive practices.



How You Can Support Transitions

- Develop relationships with your PEA Schools.
- Sharing school resources with families i.e.. Information packs (ask for info around transitions, playgroups, stay and play sessions).
- Develop Continuity and Transitioning Statements in consultation with families to be shared with preschools and schools.
- Talk with children about preschool, preparing them for the transition. Explore with children and families plans for 2026 to develop connections and friendships.
- Support families with enrolments to preschool or kindergarten where needed.
- Reach out to the PPPs for support.



Supporting Transitions

- Do you have a child at your service who is a diverse learner, has a developmental delay or a disability?
- Are there any children that will require supported transitions due to feeding requirements or management of a health condition, e.g. diabetes?
- Email us so we can help you with the supported transition and to ensure the school is ready for the child, their family and their story.



WHAT TO DO IF IN
DOUBT



Email us!

Preschoolpathways@act.gov.au

We can see where we can support or direct you to the right people anytime throughout the year.



Questions





ACT
Government

Education

PRESCHOOL PATHWAYS

A word cloud featuring the phrase "THANK YOU" in large, bold, orange letters at the center. Surrounding this central text are numerous other words and phrases in various languages, including Spanish (gracias, gracias, gracias), Japanese (ありがとう), Korean (고맙습니다), Chinese (謝謝), Russian (спасибо, благодаря), and others. The words are in different colors (blue, green, yellow, pink, purple) and orientations (horizontal, vertical, diagonal). The background is a light blue gradient with a subtle pattern of small white dots.



Preschool Pathways Program

© Australian Capital Territory, Canberra 2022



This work is licensed under a Creative Commons Attribution 4.0 license and is subject to the terms of the license, including crediting the ACT Government as author and indicating if changes were made.

ACT Government

GPO Box 158, Canberra ACT 2601

Telephone: 13 22 81

Website: www.act.gov.au

Accessibility

The ACT Government is committed to making its information, services, events and venues as accessible as possible.

If you have difficulty reading a standard printed document and would like to receive this publication in an alternative format, such as large print, please phone Access Canberra on 13 22 81.

If English is not your first language and you require a translating and interpreting service, please phone 13 14 50. If you are deaf, or have a speech or hearing impairment, and need the teletypewriter service, please phone 13 36 77 and ask for Access Canberra on 13 22 81.

For speak and listen users, please phone 1300 555 727 and ask for Access Canberra on 13 22 81. For more information on these services visit www.relayservice.com.au

We acknowledge the Traditional Custodians of the ACT, the Ngunnawal people. We acknowledge and respect their continuing culture and the contribution they make to the life of this city and this region.

These materials have been developed in partnership between the ACT Education Directorate and [Community Early Learning Australia \(CELA\)](#).